

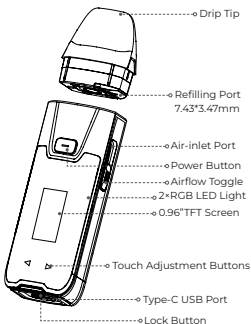
# USER MANUAL

VAPORESSO LUXE XR MAX 2

# ENGLISH

Thank you for choosing VAPORESSO product. Please read this instruction carefully before use to ensure a perfect experience. If there is any additional requirement about this product, please consult the local agent or contact us through our website: [www.vaporesso.com](http://www.vaporesso.com)

## ENLARGED VIEW

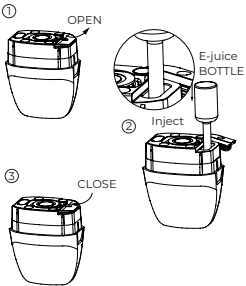


## USER INTERFACE

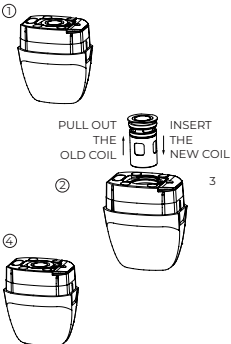


## USE INSTRUCTIONS

### FIGURE 1



### FIGURE 2



## SPECIFICATION

Dimensions: 108 x 32.1 x 26.4mm

POD Capacity: 5ml/2ml(TPD)

Battery Capacity: 3200mAh

Output Power: 80W MAX

Charging Current: DC 5V/2A,Type-C

Display : 0.96" TFT Screen, 2 \* RGB LED Light

## USE INSTRUCTIONS

### 1. Fill E-liquid

- Take out the used POD from the battery and pull out the silicone plug from the bottom of the POD;
  - Fill e-liquid through the hole
  - Put the silicone plug back in place firmly after filling is finished.
  - Please wait 5 minutes for the e-liquid to soak into the coil completely.
- \* Refer to the figure 1 above.

### 2. Replace the Coil

- Take out the POD from the battery;
  - Pull out the used coil from the POD;
  - Install a new coil to the POD;
  - Reattach the POD into place.
- \* Refer to the figure 2 above.

### 3. Adjust the Airflow

There is an airflow control toggle on the side of the battery. Adjust the toggle according to your vaping habits for different airflow effects.

\* Refer to the figure 3 above.

### 4. Power on/off the Device

Click the power button 5 times in 2 seconds to power on or off the device.

### 5. Start Vaping

Press the power button to enjoy extraordinary vaping experience.

### 6. Setting

#### 1) Adjust wattage

1. Click the power button 3 times in 2 seconds to unlock the touch adjustment button then you can adjust the wattage.

2. Click the power button 1 time to confirm the wattage you choose.

3. Recommended Power Adjustment:

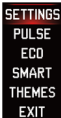
LUXE XR MAX 2 Kit is using the GTX coil platform, and the suggested power need to be noticed before start vaping.

GTX MESH COIL	GTX 0.2Ω DUAL MESH COIL	GTX 0.8Ω MESH COIL
Recommended POD	LUXE XR POD(DTL)	LUXE XR POD(MTL)

<b>Suggested POWER</b>	45-60W	12-16W
----------------------------	--------	--------

## 2) Enter the menu

Click the power button 2 times in 2 seconds to enter the menu, press touch button "<" or ">" to switch between different functions settings, click the power button 1 time to confirm the function to set:



**\*PULSE:** PULSE MODE is a mode to improve vaping experience through constant voltage output, delivering optimal flavor production, throat hit, nicotine satisfaction, and perfect temperature cloud continuously.

**\*ECO:** ECO MODE is a normal mode of output wattage; you can according to the coil resistance to adjust the best wattage for your needs. The vaping time will last longer than the pulse mode.

**\*SMART ON/OFF:** when this function is on and a POD is installed, the system will recommend the best power automatically.

**\*THEMES:** There are 3 themes(NEBULA/VITAL/WAVE) for your preference

**\*SETTINGS:** System Set



**-PUFF:** the 5 days' puff counter can be checked in this interface, and the puff can be cleared after confirm the reset option.

**-BRIGHT:** Screen brightness setting from 10-100.

**-LED:** The LED light indicators can be switch on or off in this setting

**-DEFAULT:** Restore factory settings

**-EXIT:** Back to main interface

## 7. Charge the Battery

After connecting the Type-C cable to the battery, the battery indicator and remaining charging time will be showed on the screen.

## PROTECTIONS

Protections	Situation	Indicator
Low Resistant Protection	The device detects an ultra-low resistance.	LED light quick Flash 5 times in Red →Stop Output
Short Circuit Protection	The device detects a short circuit.	LED light quick Flash 5 times in Red →Stop Output
No Load Protection	The device does not detect an atomizer.	LED light quick Flash 5 times in Red →Stop Output
High Resistance Protection	The device detect an ultra-high resistance.	LED light quick Flash 5 times in Red →Stop Output
Low Voltage Protection	The battery voltage drops too low.	LED light quick Flash 3 times in Red →Stop Output
High Temperature Protection	The PCBA temperature rise exceeds 80°C.	LED light Flash 4 times in Red →Stop Output
Over Time Protection	The vaping time exceeds 10S.	LED light quick Flash 5 times in Current Color →Stop Output

## CAUTIONS

1. Please turn off the device when it is not in use.
2. Do not leave the charging device unattended.
3. Do not drop, throw or abuse your device, which may cause damage.
4. Please use a standard USB output charger with proper charging current and voltage range.
5. Keep away from the water or any flammable gas, liquid.
6. Do not expose the device to direct sunlight, dust, moisture or mechanical shock.
7. Do not expose the device to extreme temperature.

(Recommended temperature range: -10~60°C / 14~140 °F using and -10~45°C / 14~113 °F while storing).

8. **EEE Recycling:** the product should not be treated as household waste, instead, it should be handed over to the applicable collection point for the recycling of electrical and electronic equipment.

9. **Battery Recycling:** the product battery should not be treated as household waste, instead, it should be handed over to the applicable used battery collection point for recycling.

10. Only have your device repaired by VAPORESSO. Do not attempt to repair it by yourself as damage or personal injury may occur.

11. Please keep the pins at the connection between the battery and the pod clean to ensure the best performance of the device.

12. If the product is taken on board an aircraft or encounters environments with significant changes in air pressure, it is advisable to store the pod and batteries separately, and avoid any liquid injection to prevent leakage and product damage;

## **WARNINGS**

**This refillable electronic cigarette is intended for use with compatible e-liquid, which may contain nicotine. Nicotine is an addictive substance and it is not suitable or recommended to use in following cases:**

**1. This device is not suitable for:**

- Persons under the legal smoking age.
- Persons experiencing heart disease, stomach or duodenal ulcers, liver or kidney problems, long-term throat disease or difficult breathing due to bronchitis, emphysema or asthma.
- Persons with an overactive thyroid gland or experiencing phaeochromocytoma (a tumour of the adrenal gland that can effect blood pressure).
- Persons taking certain medications like Theophylline, Ropinirole or Clozapine and etc.

**2. This device is not recommended for:**

- Non-smokers
- Pregnant or breastfeeding women

**3. You may experience the following results if you use nicotine containing e-liquid with this product. If it happens, please consult a healthcare professional and show them this leaflet if possible:**

Feeling faint / Nausea / Dizziness / Headache / Coughing / Irritation of the mouth or throat / Stomach discomfort / Hiccups / Nasal congestion / Vomition / Chest palpitations / pain or an irregular heart rate.

**This device should not be used by persons under the legal smoking age.**

# LASER ANTI-COUNTERFEITING LABEL INSTRUCTIONS

Please keep the anti-counterfeiting code on the packaging for after-sale service.

## STEP 1 Check the label



Flip the label under light with different angle, you will see the letter "V" position change.

## STEP 2 Verify the QR code



1. Scratch

2. Scan QR code to verify.



# LIMITED WARRANTY CARD

## Limited 90-Day Warranty Terms

VAPORESSO will provide repair or replacement to the original purchaser of this product under warranty according the following terms and conditions:

1 This warranty covers any defects in materials or workmanship in this product if a claim is submitted to VAPORESSO within 90 days of purchase by the end user.

2 This warranty may be disqualified as a result of the following circumstances:

- ▶ the customer does not provide this warranty card and the original receipt of purchase.
- ▶ merchandise failure or damage is caused by improper use or unauthorized adjustments.
- ▶ merchandise failure or damage as a result of excessive force or impact and non recommended operating conditions (see user manual).
- ▶ merchandise failure or damage caused by exposure to water or other conducting liquids.
- ▶ merchandise failure or damage caused by use with non-VAPORESSO brand components or recommended e-liquids.

3 In no event will VAPORESSO be liable for any **SPECIAL** or **CONSEQUENTIAL** damages arising from the use of this product, nor for injury to any person, or any claim for damages arising from the use of this product.

Except as expressly provided in this Limited Warranty, VAPORESSO expressly disclaims all implied warranties for this product of any kind whatsoever, including, but not limited to, implied warranties of merchantability or fitness for a particular purpose and all warranties imposed by statute, after the expiration of 90 days after purchase by the end user.

---

★ For more information please consult our website at [www.vaporesso.com](http://www.vaporesso.com) or email us at [support@vaporesso.com](mailto:support@vaporesso.com)

---

Please keep the warranty card for the after-sale service. Warranty will be disqualified if the warranty card is lost.

## Purchase Information

Product Model: \_\_\_\_\_

Date of Purchase(Baesd on the date from receipt of purchase):

Month \_\_\_\_\_ Day \_\_\_\_\_ Year \_\_\_\_\_

### Store Information:

Store Name: \_\_\_\_\_

Phone: \_\_\_\_\_

Store Address: \_\_\_\_\_

City: \_\_\_\_\_ Country: \_\_\_\_\_

Post Code: \_\_\_\_\_

### Customer Information:

Customer Name: \_\_\_\_\_

Phone: \_\_\_\_\_

Customer Address: \_\_\_\_\_

City: \_\_\_\_\_ Country: \_\_\_\_\_